

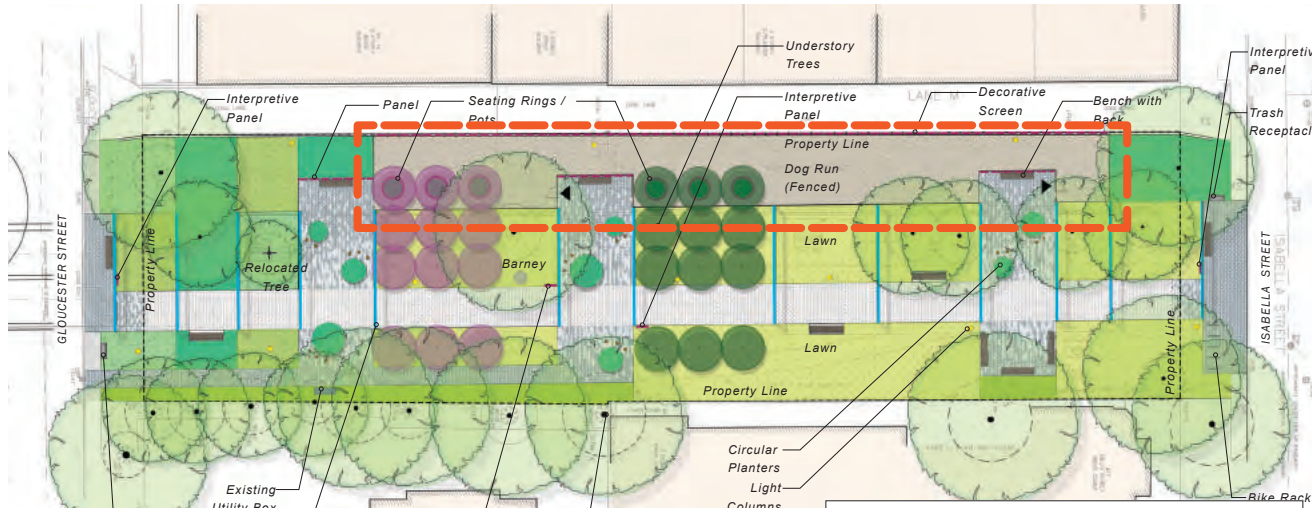
## WHAT'S NEXT

The next section of this document presents design options that developed out of discussions with the community and the City of Toronto Parks, Forestry, and Recreation staff. Final City approval on the preferred options will be required.

## DESIGN OPTIONS

# INPUT & BRAINSTORMING

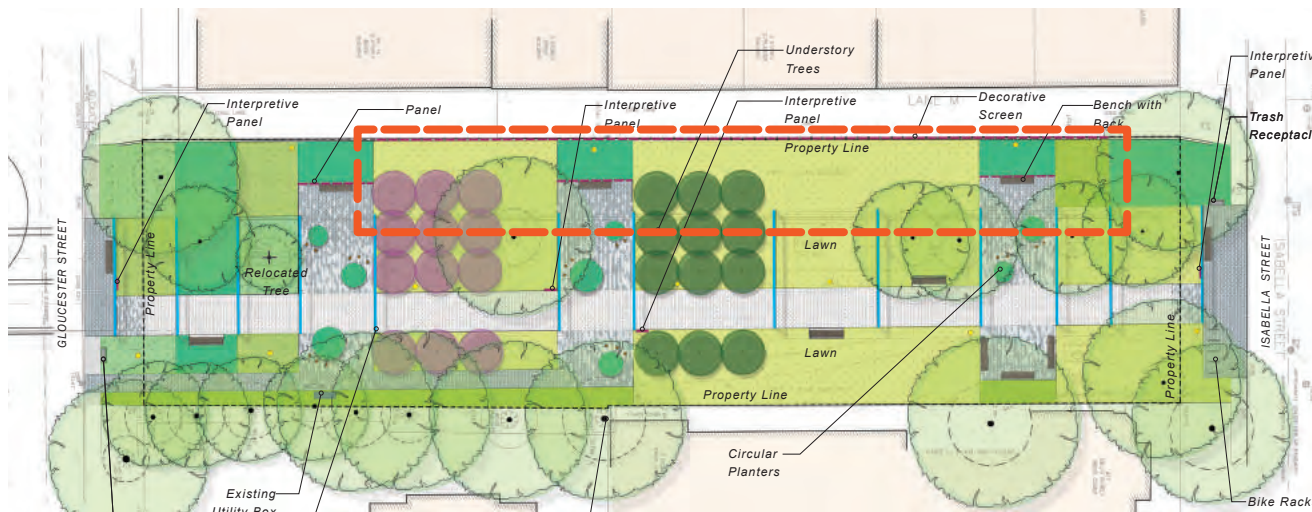
## OPTIONS - DOG PARK VS. LAWN



### Input from Public Meeting #1:

- The group was split on whether to have 2 dog runs, or just the one at George Hislop Park. The group suggested that the dog park at Norman Jewison could be lawn if 2nd dog run not needed (dependent acquisition of Green P parking lot).

### NORMAN JEWISON PARK - OPTION 1 - WITH DOG RUN AT GREEN P

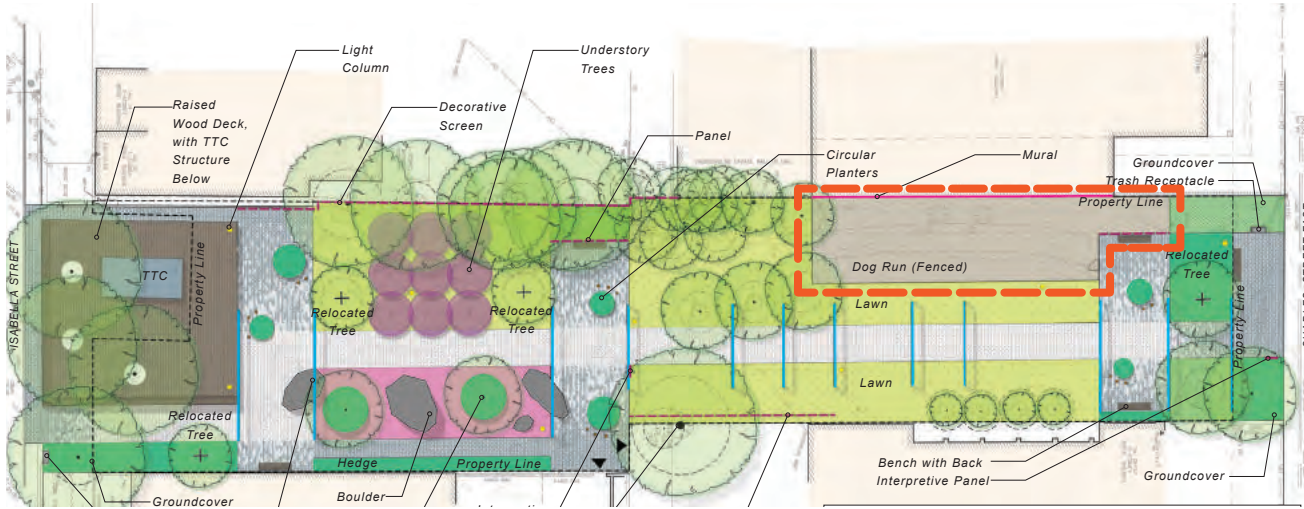


### NORMAN JEWISON PARK - OPTION 2 - WITH LAWN AT GREEN P

\* OPTION 1 SELECTED

# INPUT & BRAINSTORMING

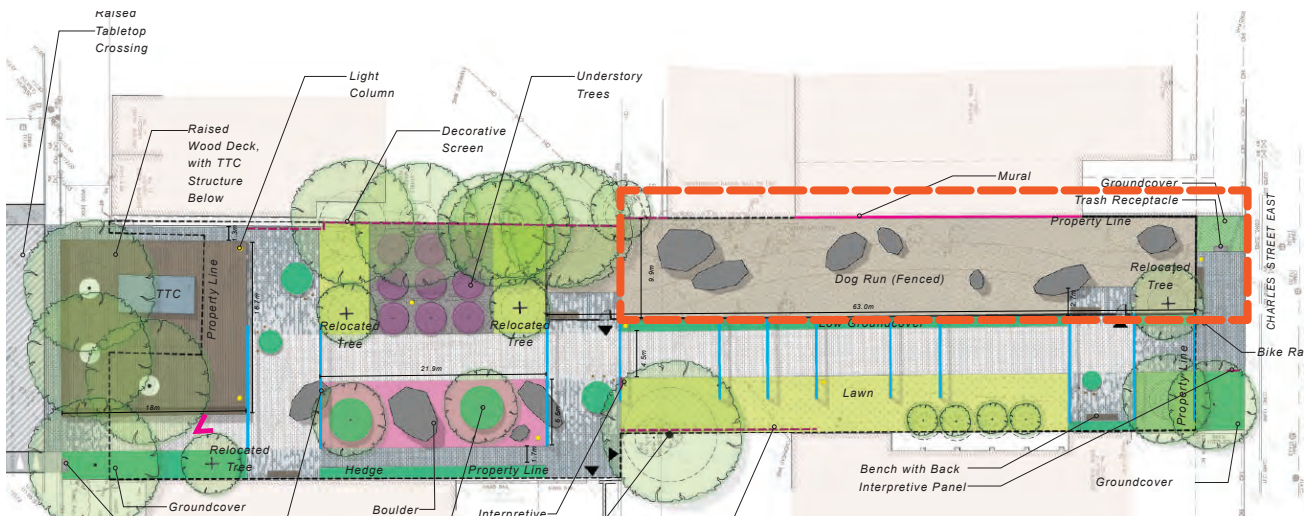
## OPTIONS - EXPANDED DOG RUN



### Input from Public Meeting #1:

- People love having a dog run and like how it animates the area near Sanctuary in George Hislop Park.

### GEORGE HISLOP PARK - OPTION 1 - DOG RUN FROM PUBLIC MEETING #1



- We have expanded the size to provide ample room and have provided two entrance/exits. The dog run is still smaller than the City's preferred size & special approval from Council would be required.

### GEORGE HISLOP PARK - OPTION 2 - EXPANDED DOG RUN

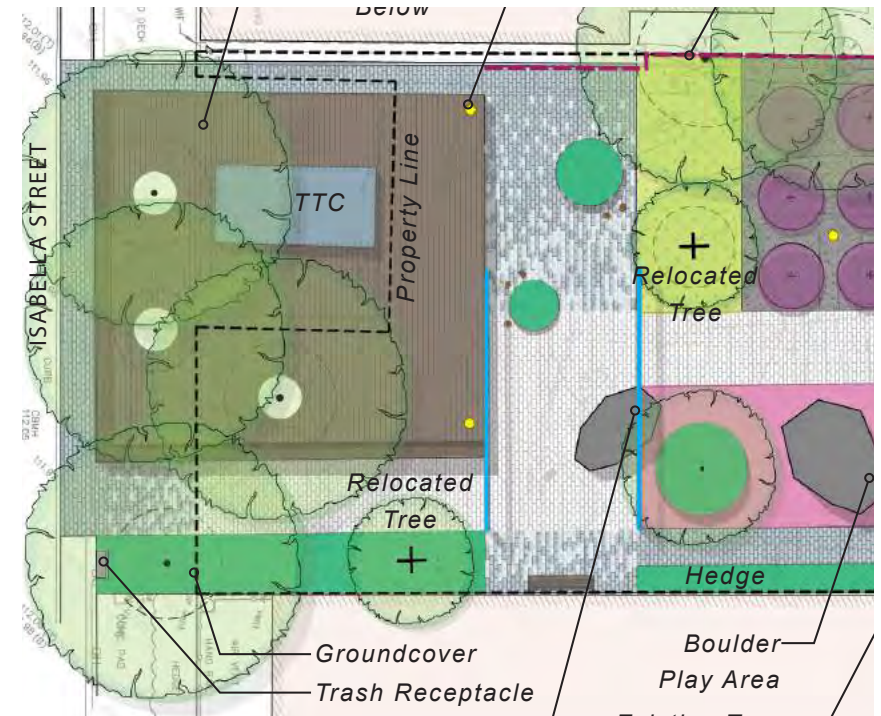
\* OPTION 2 SELECTED

# INPUT & BRAINSTORMING

## OPTIONS - AT TTC AIR SHAFT

### Input from Public Meetings:

- The public was supportive of a wood stage in George Hislop Park with steps fronting on Isabella Street, however Parks, Forestry, and Recreation staff indicated potential issues with maintenance, as have been experienced at Barbara Hall Park. Two alternative options were proposed; one proposes a smaller wood bench/seat wall and the other proposes a lawn condition. Both include the expansion of the boulders into the area. A final decision is dependent on budget and Parks, Forestry, and Recreation's approval.

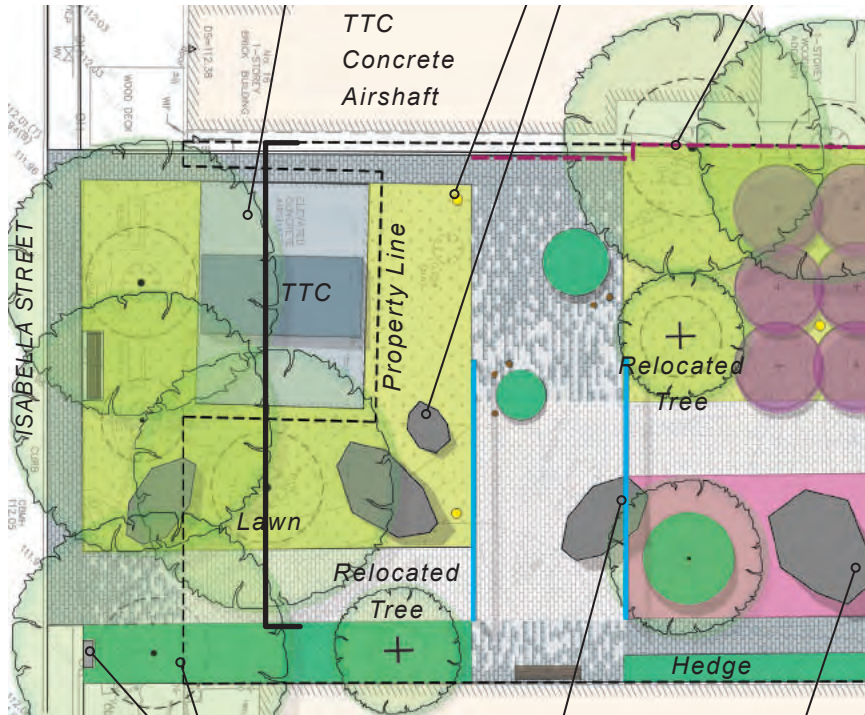


**GEORGE HISLOP PARK -**  
OPTION 1 - LARGE RAISED WOOD DECK  
SHOWN AT PUBLIC MEETING #1

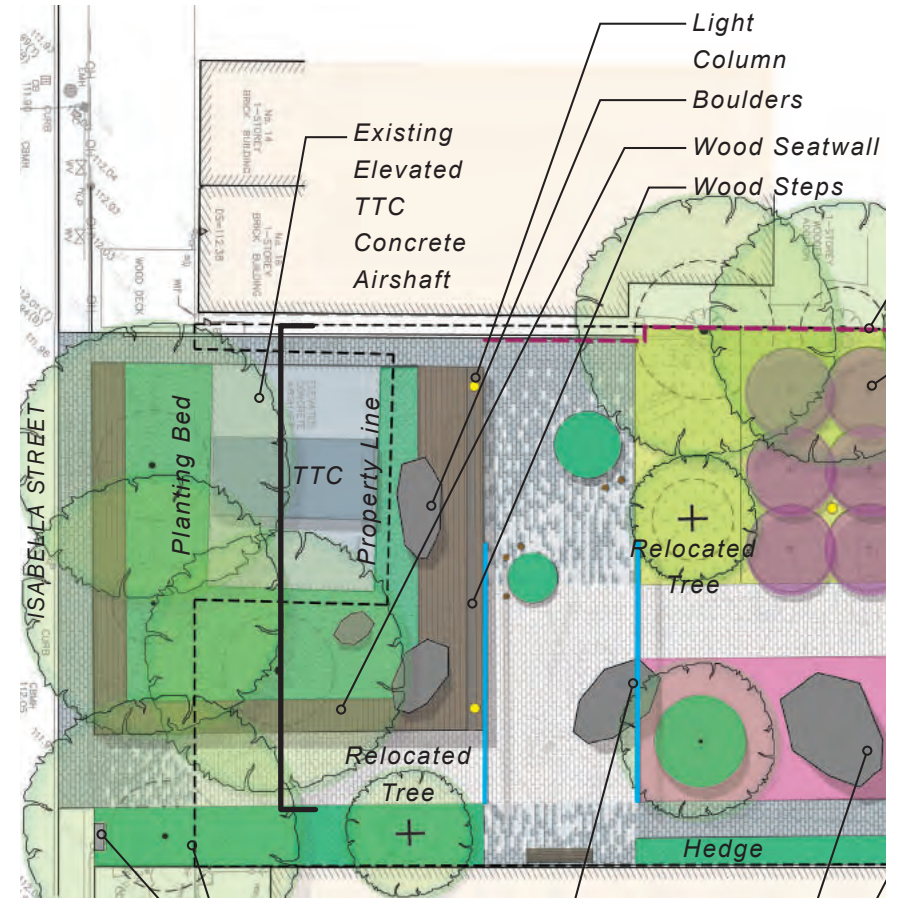
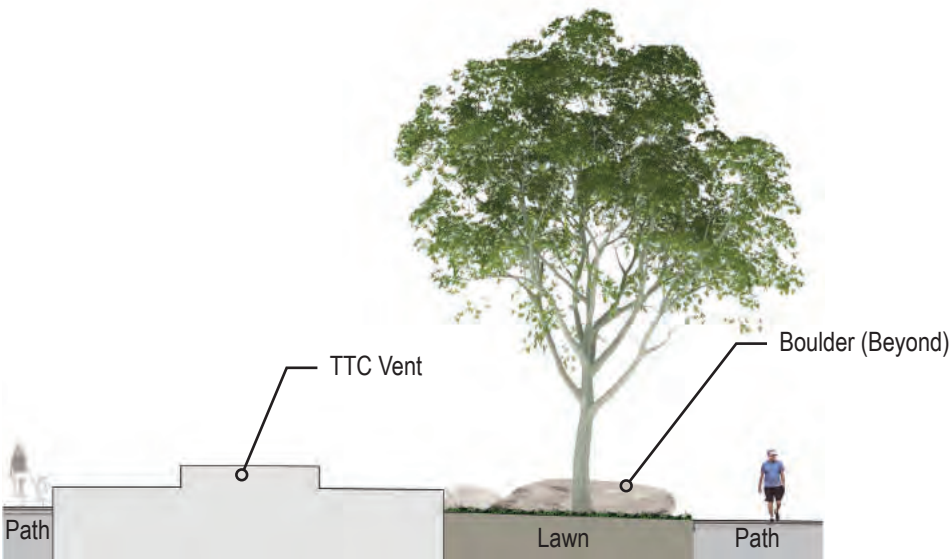
Barbara Hall Park. Thinc Design. Digital Image. 2016. <http://thincdesign.ca/?portfolio=cawthra-park>



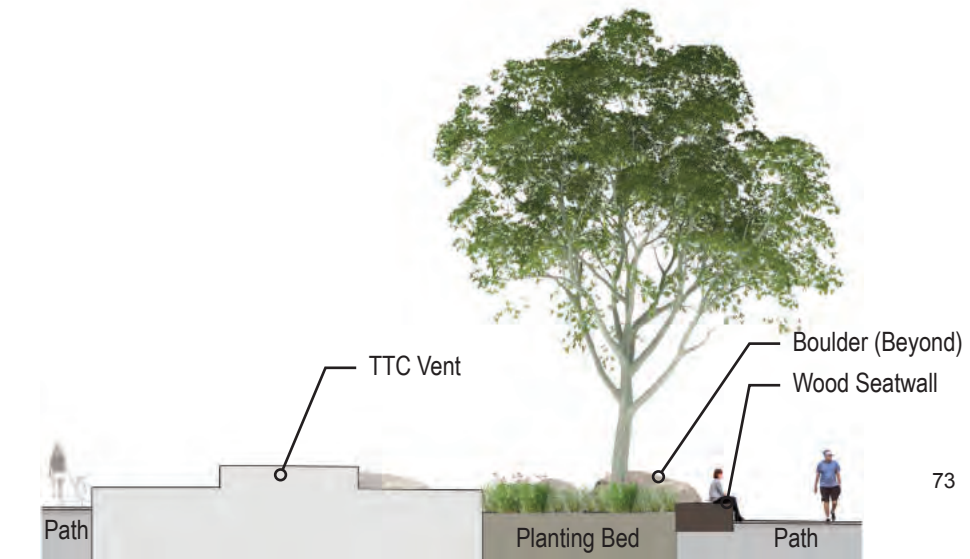
# INPUT & BRAINSTORMING OPTIONS - AT TTC AIR SHAFT



**GEORGE HISLOP PARK -  
OPTION 2 - LAWN AND BOULDERS**

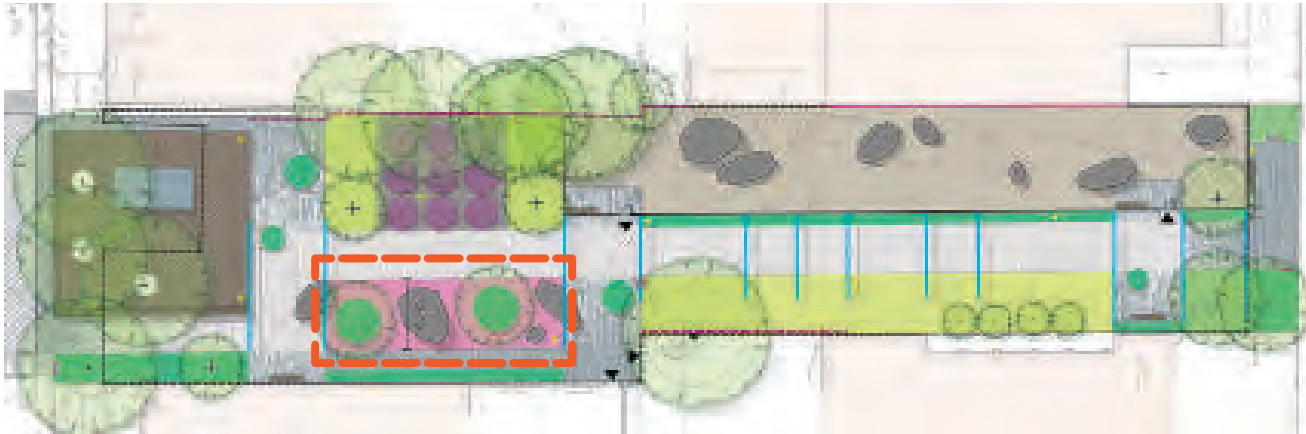


**GEORGE HISLOP PARK -  
OPTION 3 - SEATWALL AND BOULDERS**



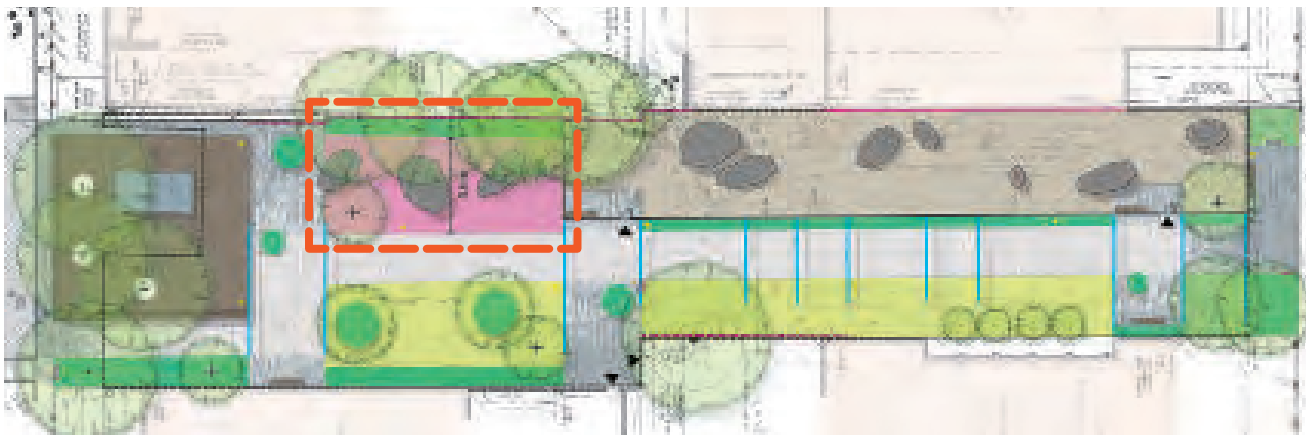
# INPUT & BRAINSTORMING

## OPTIONS - GEORGE HISLOP: PLAY / PLANTING REVERSAL



Out of concerns around the space requirements of the unstructured play area, an option was developed that situates the boulders and rubberized surface on the west side of the central pathway. This consolidates the active uses in the park entirely along the western half. Final decision is pending Parks, Forestry, and Recreation's approval.

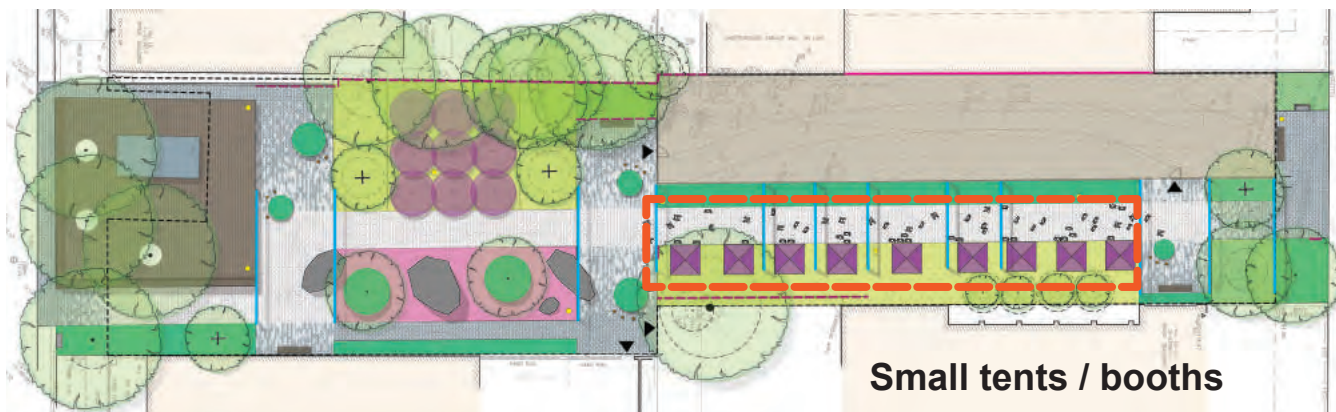
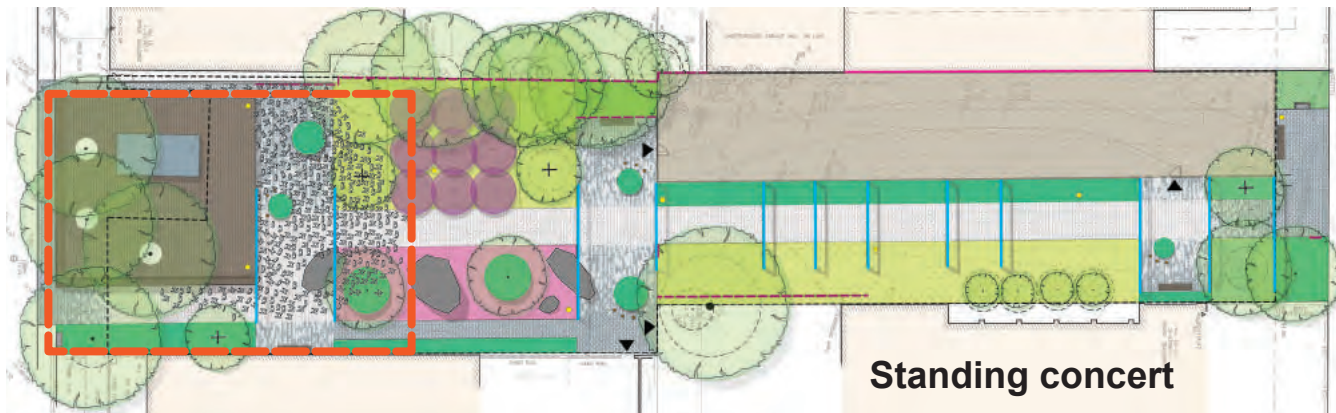
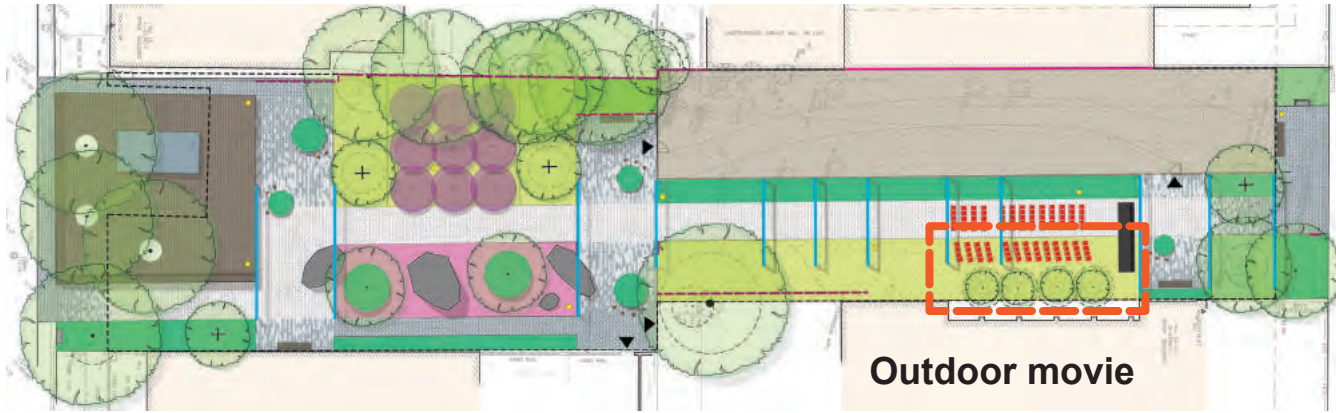
**GEORGE HISLOP PARK -**  
OPTION 1 - GROVE TO WEST, PLAY TO EAST



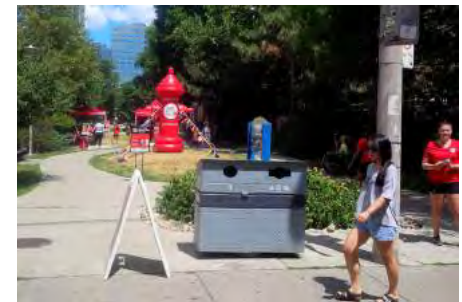
**GEORGE HISLOP PARK -**  
OPTION 2 - PLAY TO WEST, LAWN TO EAST

# INPUT & BRAINSTORMING

## EVENT OPTIONS



The public indicated flexibility was important for various events held in the parks. Here George Hislop Park is shown with spaces that can be programmed in a number of ways. No new programming was requested by the public.



JRS photo 2016.



<http://fringetoronto.com/fringe-festival/fringe-after-dark/>

